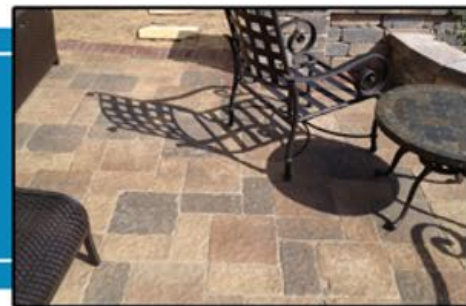


SURFBLOCK™ SB-12

solvent based silane/siloxane water repellent

WATER REPELLENTS



Surfblock SB-12 is a 12% active solvent-based silane/siloxane water repellent and impregnating agent for porous masonry surfaces such as concrete, block, brick, and unglazed tile. Surfblock SB-12 will penetrate and chemically bond deep within the substrate to provide long lasting protection against deterioration or staining due to water conditions. Surfblock SB-12 will not impair the natural breathing characteristics of treated substrates, nor will it produce a film. Surfblock SB-12 will help concrete and masonry surfaces to resist common issues such as cracking, efflorescence, spalling, staining, and other damages caused by intrusion of water. It also helps protect the surface from damaging effects of water intrusion, acid rain, de-icing chemicals and freeze/thaw exposure. Because of the formulation of Surfblock SB-12, it may be applied to a concrete surface that has been previously coated with many solvent based acrylic sealers.

Specifications / Compliances

- Dried coating is USDA accepted.

Key Features & Typical Benefits

- Deeply penetrating porous surfaces and provides superior water repellency, while allowing surface to breathe.
- Resists damage caused by deicing salts and freeze/thaw cycles.
- Provides excellent resistance to mold, mildew, and fungus.
- Superior efflorescence and strong alkali resistance compared to common solvent based acrylic sealers.

Recommended Applications

- Effective on unsealed applications such as...
- Broom Finish Concrete
 - Smooth Trowel Concrete
 - Exposed Aggregate Concrete
 - Masonry Block
 - Fired Clay Brick
 - Concrete Pavers
 - Concrete walls

Typical Properties & Technical Information

PROPERTY	VALUE
Solids/Active Content, Percentage by weight	12% +/- 1%
Dry Time	1 - 2 hours
Dry Time - Foot Traffic	8 hours - 12 hours
Dry Time - Heavy Traffic	24 hours - 48 hours
Re-Coat Time Window	See instructions
Application Temperature	50° F - 80° F
VOC (Volatile Organic Compound) Content	Less than 600 grams/Liter
Appearance - Wet	Clear to Slightly Hazy
Appearance - Dry	Clear and Invisible

Surfblock SB-12

Application Instructions

SURFACE PREP: Prior to surface preparation, protect people, property, automobiles, plants and any other non-masonry surfaces and objects from the material, wind drift, and splash, residue, and fumes of the material. Protecting and diverting pedestrians and automobile traffic is also recommended.

Proper surface preparation is highly important. Use the proper cleaning detergent for the substrate at hand. It is recommended that Surfblock SB-12 be applied on a clean, visibly dry and absorbent surface. Please note that excessive moisture inhibits good penetration, which can reduce the life and performance of the coating.

The temperatures of the air and the surface are very pertinent aspects of applying any coating. The minimum temperature of the air and surface must be at least 40°F during application, and for at least 8 hours after. If freezing conditions exist prior to application, it is highly recommended that the substrate be allowed to fully thaw. Should this recommendation not be followed, the product may not yield adequate protective properties. Also, air and surface temperatures should never exceed 80°F.

MIXING: Stir well before using. Material may separate during long term storage. **Do Not Thin!**

COVERAGE RATE: *First Coat* : 100 - 300 ft² per gallon*

*Coverage rates may vary depending upon surface porosity, texture, application method and prior sealer application. Excessive build up should be avoided.

APPLICATION: Proper equipment should be used when applying Surfblock SB-12. A brush, roller, or low pressure sprayer should be used to apply. If using a sprayer, be sure the psi is no greater than 20. Set the sprayer to achieve a good, wet stream, avoiding atomization of the product. Be sure that any container used for mixing or material handling is clean, free of any debris, and uncontaminated. Before applying material, please read full technical data sheet for proper preparation, application, and to be sure to follow all safety measures guide lined in this report. Always test any substrate before overall application to ensure desired results. Please test using the following application instructions. Also, let the test area dry completely before final inspection and approval. When applying over a floor previously coated with a cure & seal, Surfblock SB-12 should be sprayed and then back rolled over the surface to re-solvate the resin on the concrete, allowing penetration and sealing it off from water and harmful deicers that often cause deterioration of the concrete surface.

HORIZONTAL APPLICATION INSTRUCTIONS: By roller, apply Surfblock SB-12 at a rate of 100-300 sq. ft. per gallon depending upon surface type and porosity. Broom out puddles until surface is penetrated. Re-apply a second coat. Less material may be sufficient for a second coat. Once again, broom out any puddles until material has penetrated. This is a "wet-on-wet" application. Coated surfaces should dry to touch in approximately one hour. The coated substrate should be protected from weathering conditions for at least 8 hours after application. A neutral pH surface may need several days to achieve full water repellency.

VERTICAL APPLICATION INSTRUCTIONS: For best results, apply Surfblock SB-12 "wet-on-wet" at a rate of 100-300 sq. ft. per gallon depending upon surface type and porosity, to a dry and absorbent surface. When using a sprayer, saturate from the bottom up while applying enough material for a 4"-8" rundown below the spray contact point. Let the first application penetrate the substrate for at least 5-10 minutes. Re-apply the material; less material will be needed for the second application. When using a brush or roller, saturate the surface uniformly, allowing Surfblock SB-12 to penetrate for 5-10 minutes. Brush out heavy runs and drips that show signs of no penetration. The second coat is recommended for maximum protection.

PLEASE NOTE: It is always recommended to test the product in a small, inconspicuous area (on the same concrete substrate) for desired results prior to application. Coverage rates may vary for all coatings and substrates depending on porosity, density, texture etc. If applying by spray method, extended coverage rates may be achieved, but be aware that less material will be applied and performance expectations may be limited.

Precautions and Limitations

- This product will not freeze during storage, however, allow temperature to rise to 50°F prior to application.
- All HVAC ventilation ducts should be somehow blocked prior to application so solvent fumes are not distributed.
- If using indoor, use proper ventilation while applying and for hours after application to ensure fumes are removed.
- Keep away from open flames. Product is flammable and is very susceptible to ignition.
- It is not recommended to apply product over carpet, tile, or other types of floor adhesives.
- This product performs best when applied as one or two medium-light coats, not one heavy coat.
- This product was designed for a water repellent for porous surfaces. Not intended as a decorative top coat.
- Please know that it may take up to 72 hours for this product to obtain its full water repellency properties.
- It is not recommended to thin product. Improper thinning may cause sealer to delaminate in a short time frame.
- This product may darken the surface of many new and existing concrete slabs. Test prior to use.
- Adhesion of cementitious coatings, stucco, plaster, etc., may be adversely affected.
- This product will not keep water out of cracks, defects, or open joints.
- Solvent vapors are heavier than air and may travel along the ground or may be moved by ventilation and ignited by pilot lights, other flames, sparks, heaters, smoking, electric motors, static discharge, or other ignition source locations distant from material handling point.

CLEAN-UP: Use xylene or soap and warm water. Dispose of containers in accordance with local, state and federal regulations.

PRODUCT REMOVAL: Coating deeply penetrates surface. Removal is not recommended.

SHELF LIFE: Up to one year from manufacture date in its original, unopened container stored at room temperature.

PACKAGING: Available in 1 gallon, 5 gallon and 55 gallon containers.

Always read all technical information, label and SDS prior to use. This information can be found online or by calling customer service at the number below.