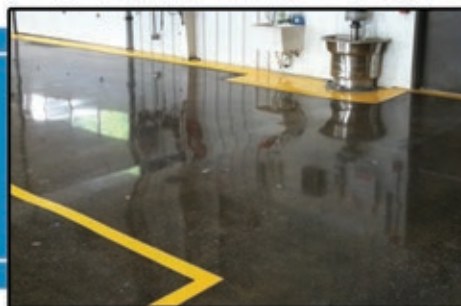


KOLOUR DYE™

translucent, interior polishing concrete dye

CONCRETE STAIN SYSTEMS



Kolour Dye™ is a translucent dye, formulated using very fine particles of color designed to penetrate and color interior cementitious surfaces, including polished concrete. Kolour Dye™ creates a unique, multi-colored translucent color scheme. Kolour Dye™ is available in 20 standard colors but can be combined to create an unlimited color palate that creates a marble effect, when used properly. Create the look of a beautiful, custom acid stained floor in about 1/3 of the time.



Specifications / Compliances

• Meets OTC, CARB, LADCO & SCAQMD VOC restrictions.

Key Features & Typical Benefits

- 20 great standard colors give a wide variety to choose from.
- Very economical way to finish and beautify most types of interior concrete.
- Kolour Dye penetrates deep into the substrate for polishing concrete.
- Provides a beautiful mottled effect similar to the likes of acid stains.
- Mixes with acetone to dramatically cut time and costs on the job.
- Contains 0 g/L VOC content making this product legal for sale to all regions of the US and Canada.

Recommended Applications

- Effective on applications such as...
- Grocery Stores
 - Garages
 - Restaurants
 - Showrooms
 - Many other interior concrete surfaces where a colored, polished floor is desired.

Typical Properties & Technical Information

PROPERTY	VALUE
Solids/Active Content, Percentage by weight	Concentrated
Dry Time - Tack Free	5 - 15 minutes
Dry Time - Foot Traffic	Refer to instructions
Dry Time - Heavy Traffic	Refer to instructions
Re-Coat Time Window	Refer to instructions
Application Temperature	50° F - 80° F
VOC (Volatile Organic Compound) Content	0 grams/Liter
Appearance - Wet	Depends on color chosen
Appearance - Dry	Light, Chalky color until sealed

Testing in accordance with procedures outlined in EPA Method 24, "Volatile Organic Content VOC of Paints and Related Coatings". The solids content was determined in accordance with ASTM D 5095 and the VOC was calculated in accordance with ASTM D 3960.

Surface Coatings, Inc.
134 Davis St. • Portland, TN 37148
P: (615) 323-9461 • F: (615) 323-9816
url: www.surfkoat.com

Kolour Dye™ is a trademark of Surface Coatings, Inc. • Refer to msds prior to use.

Kolour Dye

Application Instructions

SURFACE PREP: Test areas are strongly recommended on the actual surface of the proposed application. Testing in several areas of the concrete will better determine suitability, coverage, adhesion and approximate final results. The application area should be clean and free from all forms of dirt, oil, alkali, paint, cure & seals, and any other form of contaminant. The concrete surface must be prepped within the proper ASTM guidelines for the specific type of protective coating to be used. Failure to open the pores of the surface adequately may result in delamination. Diamond grinding is the preferred method for most applications, however, a thorough acid etch may be sufficient if done properly. Apply a test spot to check for sufficient adhesion to the substrate prior to doing the entire job. Protect all areas not to be dyed accordingly. Apply Kolour Dye™ only to dry, cured, neutral concrete surfaces.

MIXING: Kolour Dye™ is packaged only in a powder form which needs to be mixed with acetone in 1 quart, 1 gallon, or 5 gallon increments. Empty Kolour Dye™ into appropriate amount of acetone per instructions (this will depend on the size of the bottle purchased). Using the re-closable acetone container is recommended for mixing. Blend the mixture by stirring the open container, or by shaking the closed container for 30 seconds. Allow the mixture to dissolve for at least 3 hours prior to application. If a slower drying solution that will create a better mottled effect is desired, add the recommended amount of Kolour Dye™ Penetration and Mottling Agent at any time prior to application, per instructions. Kolour Dye™ Penetration and Mottling Agent is not recommended for porous concrete surfaces. Do not use any form of electrical equipment to mix the dye with the acetone. It is recommended to follow the manufacturer of the acetones instructions and the material safety data sheet (MSDS) for exposure limitations and safe handling practices.

WARNING: It is recommended to follow the manufacturer of the acetones instructions and the safety data sheet (SDS) for exposure limitations and safe handling practices. Acetone is highly flammable! Do not smoke! Turn off all portable heaters and gas pilot lights. Extinguish all open flames prior to use! Avoid sparks!

COVERAGE RATE: *First Coat* : 600 - 1000 ft² per gallon* *Optional Second Coat* : 600 - 1000 ft² per gallon*
*Coverage rates above reflect approximate coverage of finished product (per gallon) applied per instructions. Coverage rates will vary significantly and will be determined upon the surface porosity of the concrete as well as the application style.

APPLICATION: Apply Kolour Dye™ using an acetone sprayer with a #6 or #8 tip, keeping the tip approximately 24 inches from the surface. Apply in a uniform circular motion, not allowing the dye to puddle. The concrete surface should appear wet for just a few seconds when applied properly. Mop up any puddle or excess dye with a clean rag to allow the surface to dry evenly. Allow Kolour Dye™ to dry for approximately 1 minute. When using Kolour Dye™ in conjunction with polishing, apply the dye after polishing with a 400 grit resin. If needed, a second application of Kolour Dye™ may be applied prior to the final cycle. **FOR PERSONAL PROTECTION USE GLOVES, GOGGLES, AND RESPIRATORS.**

CLEANING: Kolour Dye™ may leave residual dye on the surface after each application. It is recommended to dry buff using a buffer/burnisher with a white pad to remove loose dye. Vacuum or dust mop loose dye prior to sealing application. The use of water to clean and remove loose dye is not recommended. When polishing, neglecting to clean residual dye can affect resin performance.

SEALING: If not polishing, seal Kolour Dye™ using a low viscosity, sprayable sealer. Use appropriate sprayer and tip per individual sealer instructions. Two coats are recommended for superior protection. It is not recommended to roll-on sealer over Kolour Dye™, as it may reactivate the dye. 2000 Supreme or Stamp Seal are recommended sealers when using Kolour Dye™.

WAXING: When using a floor wax, allow sealer to dry and completely cure for 3-4 days. Apply wax per manufacturer's specifications. Cherry Surf-Wax Gloss or Matte and Top Coat are our recommended floor waxes.

PLEASE NOTE: It is always recommended to test the product in a small, inconspicuous area (on the same concrete substrate) for desired results prior to application. Coverage

Precautions and Limitations

- This product will not freeze during storage, however, allow temperature to rise to 50°F prior to application.
- All HVAC ventilation ducts should be somehow blocked prior to application so solvent fumes are not distributed.
- If using indoor, use proper ventilation while applying and for hours after application to ensure fumes are removed.
- It is not recommended to apply product over carpet, tile, or other types of floor adhesives.
- This product performs best when applied as one or two medium-light coats, not one heavy coat.
- Please be aware that this product when cured may be slippery when wet. An anti-slip additive, such as Surf-Grip, can be added to reduce slip hazards.
- This product is not resistant to brake fluid, gasoline, and many similar products.
- Thin only as instructed. Improper thinning may cause sealer to delaminate in a short time frame.
- This product may darken the surface of many new and existing concrete slabs. Test prior to use.
- Follow the instructions for the chosen top coat for surface prep and application instructions.
- **SOLVENT VAPORS ARE HEAVIER THAN AIR AND MAY TRAVEL ALONG THE GROUND OR MAY BE MOVED BY VENTILATION AND IGNITED BY PILOT LIGHTS, OTHER FLAMES, SPARKS, HEATERS, SMOKING, ELECTRIC MOTORS, STATIC DISCHARGE, OR OTHER IGNITION SOURCES AT LOCATIONS DISTANT FROM MATERIAL HANDLING POINT.**

CLEAN-UP: Use xylene. Dispose of containers in accordance with local, state and federal regulations.

PRODUCT REMOVAL: Material is a concrete dye and can not be chemically stripped. A commercial sand blaster, floor sander, diamond grinder, or another similar mechanical machine is necessary.

SHELF LIFE: Up to one year from manufacture date in its original, unopened container stored at room temperature.

PACKAGING: Available in 8 oz. container* (mixes with 1 QUART acetone), 16 oz. container* (mixes with 1 GALLON acetone), and 32 oz. container* (mixes with 5 GALLONS acetone). *All are filled to required concentration weight. Actual volume of each will vary by color.

Always read all technical information, label and SDS prior to use. This information can be found online or by calling customer service at the number below.