

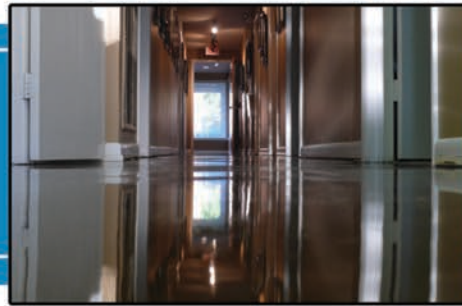
SURFKOAT

Surface Coatings, Inc.
Manufacturers of Industrial and Decorative Concrete Materials

CHERRY WAX

cherry scented water based acrylic floor wax

HIGH PERFORMANCE FLOOR WAX



Cherry Wax is a cherry scented, water based interior acrylic floor wax. It is perfect for small areas as well as large commercial areas as it can be applied by dust mop or high speed burnishing. Cherry Wax yields rapid gloss build along with superior long term wear characteristics. Its superior resistance to wet and dry traffic wear can yield a smooth polished look for months without maintenance.

Key Features & Typical Benefits

- Pleasant cherry scent is less abrasive on the senses than many similar interior waxes.
- Provides superior protection and resistance to abrasion and scuffing.
- This product is non-yellowing, non-flammable, non-combustible, non-corrosive and not hazardous.
- Easy to use and has great coverage.
- Contains 0 g/L VOC content making this product legal for sale to all regions of the US and Canada.

Recommended Applications

Effective on applications such as...

- Acid Stained Floors
- Over Metallic FX
- Kolour Dye'd Floors
- Any other interior sealed concrete surface where a glossy wax with superior maintenance properties is desired.



Specifications / Compliances

- Slip-Resistant per ASTM Standard D2047
- Meets OTC, CARB, LADCO & SCAQMD VOC restrictions.

Typical Properties & Technical Information

PROPERTY	VALUE
Solids/Active Content, Percentage by weight	21% +/- 1%
Dry Time - Tack Free	1 - 2 hours
Dry Time - Foot Traffic	12 - 24 hours
Dry Time - Heavy Traffic	24 - 48 hours
Re-Coat Time Window	1 - 3 hours
Application Temperature	50° F - 80° F
VOC (Volatile Organic Compound) Content	0 grams/Liter
Appearance - Wet	Milky White
Appearance - Dry	Clear and High Gloss

Testing in accordance with procedures outlined in EPA Method 24, "Volatile Organic Content VOC of Paints and Related Coatings". The solids content was determined in accordance with ASTM D 5095 and the VOC was calculated in accordance with ASTM D 3960.

Surface Coatings, Inc.
134 Davis St. • Portland, TN 37148
P: (615) 323-9461 • F: (615) 323-9816
url: www.surfkoat.com

Refer to technical data and msds prior to use.

Cherry Wax

Application Instructions

SURFACE PREP: Allow any coatings to fully cure for at least 3-5 days prior to applying wax. Be sure the area of the concrete to be removed is free of trash and debris. Protect all other areas. Mask off all adjacent surfaces with painter's tape or plastic duct tape. If spray buffing, use a plastic or coated cardboard as a spray shield.

MIXING: Stir well before using. Material may separate during long term storage.

COVERAGE RATE: *First Coat* : 1,000 ft² per gallon* *Additional Coats* : 1,000 ft² per gallon*

*Coverage rates may vary depending upon surface porosity, texture, application method and prior sealer application. Excessive build up should be avoided.

APPLICATION:

1. Do not apply by pouring directly onto surface. Use a plastic roller pan. Apply by microfiber dust mop, synthetic fiber wax applicator, or lambs wool applicator.
2. Apply at a rate of 1,000 square feet per gallon in very thin coats only. Apply in one direction to a consistent, even, and uniform finish. If puddling or pinholes appear, work them out into a thin coat.
3. Allow to dry 1-3 hours. Repeat process as many times as necessary to achieve required finish.

If spray buffing, dilute wax 1:2 with water. Apply using a trig mist sprayer over a small area at a time. Buff that area with a 300 - 500 RPM buffer in a side to side motion until the liquid has disappeared and a superior shine is left. Continue this same process throughout the whole floor.

If burnishing, allow wax to dry thoroughly. Using a 1000 - 3000 RPM burnishing machine, work in a front to back line with a natural hair or synthetic material burnishing pad.

Maintenance coats may be necessary every once in a while as traffic will eventually dull the surface. Simply mop the area clean using a light, pH neutral detergent solution (See Concrete Cleaner by SurfKoat). Allow to dry and then apply a coat of wax to rejuvenate the smooth finish.

Warning: When applying wax over a newly sealed surface, allow 3-5 days with proper ventilation prior to wax application. Failure to allow this window could result in blushing of the wax.

PLEASE NOTE: It is always recommended to test the product in a small, inconspicuous area (on the same concrete substrate) for desired results prior to application. Coverage rates may vary for all coatings and substrates depending on porosity, density, texture etc. **DO NOT USE ON BRICK.**

Precautions and Limitations

- This product will freeze during storage. Store at temperatures above 40°F.
- All HVAC ventilation ducts should be somehow blocked prior to application so solvent fumes are not distributed.
- Do not allow this product to be subjected to any form of moisture for 18-24 hours after application.
- It is not recommended to apply product over carpet, tile, or other types of floor adhesives.
- This product performs best when applied in very light coats. Do not puddle or apply in thick coats.
- Please be aware that this product when cured may be slippery when wet.
- This product is not resistant to brake fluid, gasoline, and many similar products.
- This product is not resistant to hot tire pick up.
- This product may darken the surface of many new and existing concrete slabs. Test prior to use.
- This product is harmful if swallowed. Abide by recommended safety guidelines.
- This product was designed for interior, foot traffic use only. It is not recommended for exterior use.
- This product should only be diluted for spray buffing only. Do not dilute for normal use.
- This product should only be used as a sacrificial coating and not used as a sealing compound.

CLEAN-UP: Use soap and warm water. Dispose of containers in accordance with local, state and federal regulations.

PRODUCT REMOVAL: Product may be re-coated up to 100 times. When product removal is necessary, use a light ammonia and water solution or commercial wax stripper to strip the waxed area back to the sealed surface.

SHELF LIFE: Up to one year from manufacture date in its original, unopened container stored at room temperature.

PACKAGING: Available in 1 gallon, 5 gallon and 55 gallon containers.

Always read all technical information, label and SDS prior to use. This information can be found online or by calling customer service at the number below.